



# Hazloc Heaters™

Safe heat when you need it!



# XEC1


Suitable for Hydrogen

## Explosion-Proof Convection Air Heater For Hazardous Locations

Class I, Division 1 & 2, Groups B, C & D, (T2B or T3A models)

Class I, Zone 1 & 2, Ex db, Groups IIA, IIB+H<sub>2</sub>, Gb  
Class I, Zone 1 & 2, AEx db, Groups IIA, IIB+H<sub>2</sub>, Gb  
Ta = -50°C to +40°C, IP66, Type 4, (T2 or T3 models)

[www.HazlocHeaters.com](http://www.HazlocHeaters.com)

 **Hazloc Heaters™** is a manufacturer of industrial-grade air heaters suitable for hazardous and severe-duty locations.



The **XEC1 ProTektor** series of industrial-grade convection air heaters are engineered to meet the most demanding requirements of industrial environments. The harsh operating conditions require heating equipment that is safe, reliable, and available when you need it. **XEC1** convection heaters are designed for maximum heating performance and to provide primary or supplementary heating of people or equipment in areas that are classified as hazardous **gas atmosphere** locations.

***Designed for hazardous locations!***

All **Hazloc Heaters™ XEC1** models are **designed to meet U.S. and Canadian certification standards**. The four cabinet sizes of **XEC1** heaters are available in **119 single-phase** and **76 three-phase model choices** of voltage, heat output, and Division System temperature class code (T2B or T3A) combinations to meet your specific requirements. Factory built-in options and a selection of electrical enclosures are also available for added convenience and safety.

The flexibility of the **XEC1 ProTektor** design allows, at the time of factory ordering, for users to request that their electrical enclosure, plus any built-in options selected, be mounted on the **right side (standard) or left side (option)** of the sloped-top cabinet.

***Applications!***



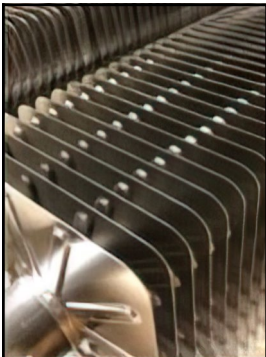
**XEC1** heaters are suitable for a wide variety of applications that include, but are not limited to, petroleum refineries, gasoline storage and dispensing areas, hydrogen atmospheres, oil & gas wellhead buildings, petrochemical plants, sewage or wastewater treatment plants, battery storage areas, dry cleaning plants and hazardous material storage buildings.



***Rugged design, but easily maintained!***

**XEC1** heaters are designed for industrial applications with all features being heavy-duty to meet your most demanding environments and long-life expectations. All aspects and details are subjected to exhaustive technical analysis and testing during design and development, and are manufactured under an ISO registered quality assurance program. Ease of installation and high-quality components minimize installation and maintenance costs.

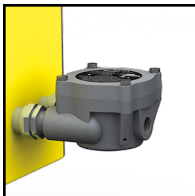
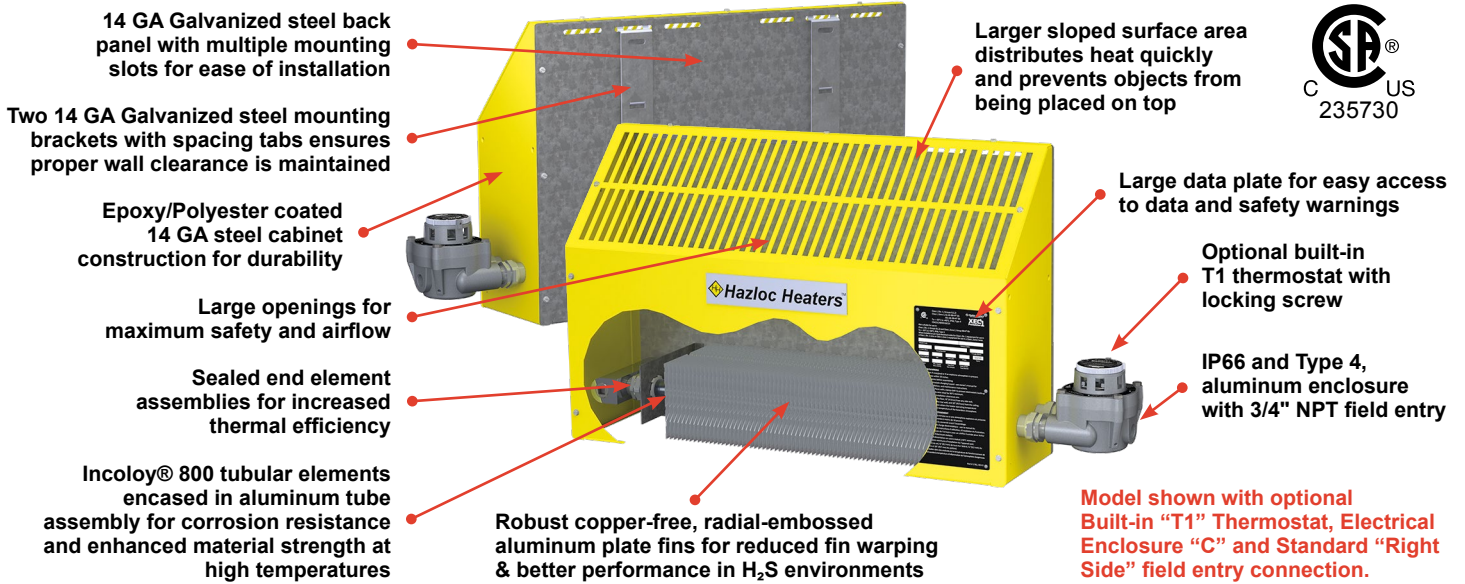
***Maximum durability... Incoloy elements, radial-embossed aluminum plate fins, and 14 GA cabinet panels!***



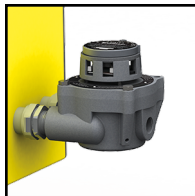
The versatile **XEC1 ProTektor** heater incorporates high quality **Incoloy® 800 tubular elements**, an aluminum tube assembly with pressed **radial-embossed aluminum plate fins**, and O-rings on enclosures for IP66 & Type 4 ingress protection. The cabinet construction consists of a 14 GA galvanized steel back panel and 14 GA carbon steel with epoxy/polyester powder-coating on the front and side cabinet panels for added protection from corrosive atmospheres. With no exposed copper or brass they are also suitable for H<sub>2</sub>S environments. Mounting brackets are fabricated from 14 GA galvanized steel.

***“Safe heat when you need it!”***

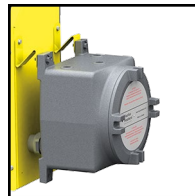
## Dedicated to Performance and Reliability!



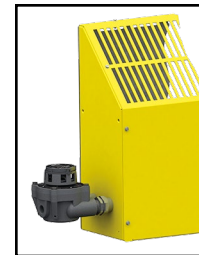
Electrical Enclosure "C" using line voltage



Electrical Enclosure "C" with optional built-in "T1" thermostat and using line voltage



Electrical Enclosure "A" (120VAC) or "B" (24VAC)



Left Side Electrical Enclosure Option Code "LC"

**NOTE:** XEC1 heaters should not be exposed to rain or snow. This applies to both installed and stored heaters.

### Suitable for the following hazardous location classifications:

- Class I, Division 1 & 2, Groups B, C & D, (T2B or T3A)
- Class I, Zone 1 & 2, Ex db, Groups IIA, IIB+H<sub>2</sub>, Gb
- Class I, Zone 1 & 2, AEx db, Groups IIA & IIB+H<sub>2</sub>, Gb
- Ta = -50°C to +40°C, IP66, Type 4, (T2 or T3)

**Limited  
18-month  
Warranty**



10kW heater shown with 304 stainless steel safety guard

Available in four cabinet sizes with a choice of electrical enclosures and factory built-in options. (Standard Right Side connections shown. For Left Side connections, select option code "LC") Refer to Pages 8 to 10 for exact configuration availability. For best heat distribution and comfort, a wall mount thermostat is recommended.

# XEC1 Model Coding

## Model and Option Code Reference Chart



Model Series	
Generation	
For major revisions	
Power Output	
0.40 kW	<b>0040</b>
0.60 kW	<b>0060</b>
0.75 kW	<b>0075</b>
0.83 kW	<b>0083</b>
0.90 kW	<b>0090</b>
1.01 kW	<b>0101</b>
1.10 kW	<b>0110</b>
1.13 kW	<b>0113</b>
1.20 kW	<b>0120</b>
1.25 kW	<b>0125</b>
1.35 kW	<b>0135</b>
1.51 kW	<b>0151</b>
1.61 kW	<b>0161</b>
1.65 kW	<b>0165</b>
1.67 kW	<b>0167</b>
1.80 kW	<b>0180</b>
2.26 kW	<b>0226</b>
2.50 kW	<b>0250</b>
2.54 kW	<b>0254</b>
2.69 kW	<b>0269</b>
3.01 kW	<b>0301</b>
3.03 kW	<b>0303</b>
3.13 kW	<b>0313</b>
3.31 kW	<b>0331</b>
3.33 kW	<b>0333</b>
3.34 kW	<b>0334</b>
3.47 kW	<b>0347</b>
3.59 kW	<b>0359</b>
3.60 kW	<b>0360</b>
3.74 kW	<b>0374</b>
4.03 kW	<b>0403</b>
4.04 kW	<b>0404</b>
4.20 kW	<b>0420</b>
4.41 kW	<b>0441</b>
4.59 kW	<b>0459</b>
4.76 kW	<b>0476</b>
4.80 kW	<b>0480</b>
5.00 kW	<b>0500</b>
5.28 kW	<b>0528</b>
5.68 kW	<b>0568</b>
6.27 kW	<b>0627</b>
6.39 kW	<b>0639</b>
6.94 kW	<b>0694</b>
6.98 kW	<b>0698</b>
7.48 kW	<b>0748</b>
7.60 kW	<b>0760</b>
8.40 kW	<b>0840</b>
10.00 kW ‡	<b>1000</b>

Factory Built-in Options	
<b>T1</b>	Thermostat, Bi-metal (BTX)
<b>LC</b>	Left Side Electrical Enclosure (standard location is on RIGHT side)
<b>ZZ</b>	Special Build (factory use only)

Product Revision No.	
For minor revisions	

Cabinet Code	
<b>31</b>	31.3 in (795 mm)
<b>49</b>	49.5 in (1257 mm)
<b>59</b>	59.5 in (1511 mm)
<b>71</b>	71.8 in (1824 mm)

Division System Temperature Code	
<b>T2B</b>	260°C (500°F)
<b>T3A</b>	180°C (356°F)

Electrical Enclosure	
<b>A</b>	120VAC, Large Enclosure
<b>B</b>	24VAC, Large Enclosure (safer) (Required with XET1 wall thermostat)
<b>C</b>	Line Voltage, Small Enclosure (Y Junction box)

Phase	
<b>1</b>	1 Phase
<b>3</b>	3 Phase

Heater Line Voltage	
<b>120</b>	120 Volts
<b>208</b>	208 Volts
<b>220<sup>^</sup></b>	220 Volts
<b>230<sup>^</sup></b>	230 Volts
<b>240</b>	240 Volts
<b>254<sup>^</sup></b>	254 Volts
<b>277</b>	277 Volts
<b>347</b>	347 Volts
<b>380<sup>^</sup></b>	380 Volts
<b>400<sup>^</sup></b>	400 Volts
<b>415<sup>^</sup></b>	415 Volts
<b>440<sup>^</sup></b>	440 Volts
<b>480</b>	480 Volts
<b>600</b>	600 Volts

Not available with 600V models, any 3-phase models, or 1-phase models that have a line current exceeding 22 amps.

A or B on all 600V models, all 3-phase models, or 1-phase heater models with a line current exceeding 22 Amps. Refer to pages 8 to 11 for specific selection details.

Not suitable for wall mount XET1 electronic thermostat

All 3-phase heaters with a wall mount thermostat require Electrical Enclosure A or B

- For best heat distribution and comfort, a wall mount thermostat is recommended.
- All models suitable for 50Hz or 60Hz operation.
- This model coding illustration is intended to explain how a product model number is described and engraved on the heater data plate. Not all voltage, wattage, built-in options and electrical enclosure combinations are available. Refer to product performance data on Pages 8 to 11 for exact product availability.
- Our wall mount thermostats require Electrical Enclosure A or B on all 600V models, all 3-phase models, or 1-phase heater models with a line current exceeding 22 Amps. Refer to Pages 8 to 11 for specific selection details.
- (‡) All 10 kW heaters include a 1/4" (6.35 mm) diameter 304 stainless steel safety guard pre-installed over the outlet grills.
- WARNING: Supply voltage must be within +/- 10% of rated heater voltage.
- Operating at voltages other than rated will result in different kW output and amp draw.

$$\text{Actual Output (kW)} = \frac{[(\text{Supply Voltage})^2 \div (\text{Rated Voltage})^2] \times \text{Rated Unit Output (kW)}}{1}$$

(<sup>^</sup>) 220, 230, 254, 380, 400, 415 & 440 Volt heaters are for applications outside of Canada and the U.S.A.

## XEC1 Weights and Shipping Dimensions by Model Size

XEC1 Cabinet Length in. (mm)		31.3 (795)	49.5 (1257)	59.5 (1511)	71.8 (1824)	
<b>Single Phase Heater</b>	Approximate Net Weight Lbs (kg)	Heater with Electrical Enclosure "C"	57 (25.9)	84 (38.1)	96 (43.5)	113 (51.3)
		Heater with Electrical Enclosure "A or B"	73 (33.1)	100 (45.4)	112 (50.8)	129 (58.5)
<b>Single Phase Heater</b>	Approximate Shipping Weight* Lbs (kg)	Heater with Electrical Enclosure "C"	75 (33.9)	107 (48.6)	121 (54.9)	143 (64.8)
		Heater with Electrical Enclosure "A or B"	91 (41.1)	123 (56.0)	137 (62.3)	159 (72.0)
Shipping Dimensions* W X D X H in (mm)		43.3 x 10.0 x 26.0 (1100 x 254 x 660)	61.5 x 10.0 x 26.0 (1562 x 254 x 660)	71.5 x 10.0 x 26.0 (1816 x 254 x 660)	86.5 x 10.0 x 26.0 (2197 x 254 x 660)	

XEC1 Cabinet Length in. (mm)		31.3 (795)	49.5 (1257)	59.5 (1511)	71.8 (1824)	
<b>Three Phase Heater</b>	Approximate Net Weight Lbs (kg)	Heater with Electrical Enclosure "C"	54 (24.5)	81 (36.7)	93 (42.2)	110 (49.9)
		Heater with Electrical Enclosure "A or B"	70 (31.7)	97 (44.0)	109 (49.4)	126 (57.1)
<b>Three Phase Heater</b>	Approximate Shipping Weight* Lbs (kg)	Heater with Electrical Enclosure "C"	72 (32.5)	104 (47.2)	118 (53.7)	140 (63.4)
		Heater with Electrical Enclosure "A or B"	88 (39.7)	120 (54.5)	134 (60.9)	156 (70.6)
Shipping Dimensions* W X D X H inches (mm)		43.3 x 10.0 x 26.0 (1100 x 254 x 660)	61.5 x 10.0 x 26.0 (1562 x 254 x 660)	71.5 x 10.0 x 26.0 (1816 x 254 x 660)	86.5 x 10.0 x 26.0 (2197 x 254 x 660)	

\* All heaters are individually packed in cardboard packaging and then strapped to a wooden pallet.

## XEC1 Physical Dimensions

**Dimension drawing for Y-mount with optional built-in room thermostat.**

**Dimension drawing for electrical enclosure. Mounting brackets not shown**

Cabinet Code	31	49	59	71
Dim.	Inches (mm)	Inches (mm)	Inches (mm)	Inches (mm)
<b>A</b>	38.4 (975)	56.5 (1435)	66.5 (1690)	78.8 (2003)
<b>B</b>	31.3 (795)	49.5 (1257)	59.5 (1511)	71.8 (1824)
<b>C</b>	7.0 (179)	7.0 (179)	7.0 (179)	7.0 (179)
<b>D</b>	40.2 (1022)	58.3 (1482)	68.4 (1737)	80.7 (2050)
<b>E</b>	8.9 (226)	8.9 (226)	8.9 (226)	8.9 (226)

## XEC1 General Specifications

	Certification	<b>cCSA<sub>US</sub> 235730 - Certified to Canadian and U.S. standards</b>
<b>Approvals</b>	Standards	CSA C22.2 No. 30                      ANSI/UL 823                              CSA 22.2 No. 60529 CSA C22.2 No. 60079-0              ANSI/UL 60079-0                      CSA 22.2 No. 94.2 CSA C22.2 No. 60079-1              ANSI/UL 60079-1                      UL 50E CSA C22.2 No. 46                      ANSI/IEC 60529
	North American Hazardous Location Classifications	<b>Class I, Division 1 &amp; 2, Groups B, C &amp; D, (T2B or T3A)</b>  <b>Class I, Zone 1 &amp; 2, Ex db, Groups IIA, IIB+H<sub>2</sub>, Gb</b> <b>Class I, Zone 1 &amp; 2, AEx db, Groups IIA, IIB+H<sub>2</sub>, Gb</b> <b>Ta = -50°C to +40°C, IP66, Type 4, (T2 or T3)</b>
	Temperature Code	<b>Division System</b> - T2B 260° (500°F) or T3A 180°C (356°F) <b>Zone System</b> - T2 300° (572°F) or T3 200°C (392°F) Refer to Pages 8 to 11 for exact Temperature Class Code rating.
	Ingress Protection	IP66 and Type 4.
<b>Cabinet</b>	Cabinet Material	14-gauge (0.075 in. / 1.9 mm) steel. Rear panel is galvanized steel. Front and side cabinet panels are yellow epoxy/polyester powder coated with five-stage pretreatment, including iron phosphate. All 10 kW heaters include a 1/4" (6.35 mm) diameter 304 stainless steel safety guard pre-installed over the outlet grills.
	Fasteners	Zinc plated steel for corrosion resistance.
	Electrical Enclosure	Cast aluminum (non-copper alloy) with O-ring. The Y junction box (Small Electrical Enclosure "C") has a bolt on cover and a 3/4" -14 NPT field wiring entry on the side. The Large Electrical Enclosure ("A or B") has a threaded lid and three 3/4" -14 NPT field wiring entries located on the top and two on the bottom.
	Mounting Brackets	Two 14-gauge (0.075 in. / 1.9 mm) galvanized steel brackets with spacing tabs to maintain proper wall clearance. Each bracket can be mounted to back of cabinet in any of the 5 designated mounting positions on each side.
<b>Tube Assembly</b>	Heating Elements	Long-life, Incoloy® 800 low watt-density, high-grade sheathed elements. Six 0.375 in. (9.5 mm) diameter elements for 3-phase (WYE configuration) heaters and two 0.430 (10.9 mm) diameter elements for 1-phase (Series configuration) heaters.
	Conduit Materials & Fittings	Plated steel and aluminum alloy for corrosion resistance.
	Element Tubes	Copper-free extruded aluminum.
	Fins	Copper-free, radial-embossed, aluminum plate fins spaced at 134 fins per linear meter (41 fins per linear foot).
<b>Controls</b>	Electrical Enclosure	Built-in 120VAC or 24VAC controls (24VAC recommended) installed inside a large aluminum enclosure is available (Large Electrical Enclosure "A or B") . For no controls, a Y junction box (Small Electrical Enclosure "C") for line voltage is used. Refer to pages 8 to 11 for availability.
	Control Contactor	40 FLA (50A resistive per pole) Definite Purpose. Suitable for 50Hz or 60Hz operation. Rated for 500,000 mechanical operations.
	Control Transformer	Multitap primary, 120VAC or 24VAC secondary. Suitable for 50Hz or 60Hz operation.
	Fuse Protection	Thermal delay fuse with spare, .25" x 1.25" , 120VAC = 1/4A, 24VAC = 1A.
	Room Thermostat With Lockable Temperature Dial (option code T1)	Built-in, <b>BTX</b> (T1) bi-metal explosion-proof thermostat, 40°F to 80°F (5°C to 25°C) available with Electrical Enclosure "C" only. Wall mount thermostats also available. See Page 7 to 11 for availability. Wall thermostats won't switch 3-phase circuits directly. <b>Note:</b> Optional <b>BLK1</b> thermostat conversion kit allows simple interchangeability from a built-in thermostat to a wall mount configuration. For best heat distribution and comfort, a wall mount thermostat is recommended.
<b>Additional Options</b>	Left Side Electrical Enclosure (option code LC)	Electrical Enclosure located on left side of heater (standard configuration is for the Electrical Enclosure to be located on right side of heater).
<b>Operating</b>	Ambient Temperature	-58°F to 104°F (-50°C to +40°C). Storage: -58°F to 140°F (-50°C to 60°C).



# Accessories

**Note: If ExCaliber™ series wall mount thermostats are being used with 600-volt XEC1 heaters, heaters with a current draw greater than 22 amps, or on any 3-phase heaters, then order the heaters with Electrical Enclosure “A” or “B”. If using your own temperature control device, a remote contactor may be required. Ensure control devices comply to local electrical code and meets the heater’s electrical ratings and is suitable for the area’s hazardous atmosphere classification.**

## Explosion-proof ExCaliber™ Series Thermostats, Remote Mount

**BTX1-N-B (SPDT) Heating or Cooling** - This is the Bi-metal thermostat used on XEC1 heaters with built-in option code (T1) and Electrical Enclosure "C" selected. Wall mount version requires Electrical Enclosure “A” or “B” or “C” depending on model.

Class I, Division 1 & 2, Groups B, C & D  
Class II, Division 1, Groups E, F & G  
Class II, Division 2, Groups F & G; Class III; T6  
-50°C ≤ T amb ≤ +40°C, IP66, Type 4

Class I, Zone 1 & 2, Ex db, Groups IIA, IIB+H<sub>2</sub>, T6, Gb  
Class I, Zone 1 & 2, AEx db, Groups IIA, IIB+H<sub>2</sub>, T6, Gb  
Class II, Zone 21 & 22, Ex tb, Groups IIIA, IIIB & IIIC, T85°C, Db  
Class II, Zone 21 & 22, AEx tb, Groups IIIA, IIIB & IIIC, T85°C, Db



Temperature adjustment range: 40°F to 80°F (5°C to 25°C); 3/4" - NPT conduit opening on top and bottom; Ship wt - 3.5 lbs (1.6 kg)  
22 Amps Resistive Load, 480 VAC Max; 1/2 HP@125 VAC; 1 HP@ 250 VAC (suitable for 24 volt or 120 volt control circuit)

**XET1-1-W-N-A (Electronic) Heating only** - Wall mount version requires heater Electrical Enclosure “B”. If a wall mount thermostat is ordered without heater Electrical Enclosure “B”, then an external 24 VAC power supply and control circuit is required (supplied and installed by others).

Class I, Division 1 & 2, Groups B, C & D  
Class II, Division 1, Groups E, F & G  
Class II, Division 2, Groups F & G; Class III; T6  
-50°C ≤ T amb ≤ +40°C, IP66, Type 4

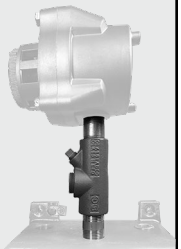
Class I, Zone 1 & 2, Ex db, Groups IIA, IIB+H<sub>2</sub>, T6, Gb  
Class I, Zone 1 & 2, AEx db, Groups IIA, IIB+H<sub>2</sub>, T6, Gb  
Class II, Zone 21 & 22, Ex tb, Groups IIIA, IIIB & IIIC, T85°C, Db  
Class II, Zone 21 & 22, AEx tb, Groups IIIA, IIIB & IIIC, T85°C, Db



Temperature adjustment range: 40°F to 80°F (5°C to 25°C); 3/4" - NPT conduit opening on top and bottom; Ship wt - 3.4 lbs (1.5 kg)  
20 to 36 VAC 50/60Hz; 1 Amp max continuous (suitable for 24 volt control circuit only)

## Field Installation & Retrofit Kits

**Built-in Thermostat Field Installation Kits for XEC1 Heater** - These two field installed built-in thermostat kits are for adding a BTX1-N-B or XET1-1-W-N-A thermostat to an XEC1 heater with Electrical Enclosure "A" (120VAC) or "B" (24VAC) and includes the electrical wires, 3/4" conduit seal, conduit nipples, sealing compound (water/cement plastic pouch) and sealing fiber. The conduit seal is certified for use in Class I, Division 1, Groups A, B, C and D; Class II, Division 1, Groups E, F and G; Class III. Installation must be inspected on site as per the local electrical code.



**BTX1-FIK** - This kit is suitable for installation of a BTX1-N-B thermostat on an XEC1 Heater with Electrical Enclosure "A" (120VAC) or "B" (24VAC). Thermostat not included.

**XET1-FIK** - This kit is suitable for installation of an XET1-1-W-N-A thermostat on an XEC1 Heater with Electrical Enclosure "B" (24VAC) only. Thermostat not included.

### BLK1-W-N-A field retrofit kit

The heater thermostat conversion kit allows simple interchangeability from a built-in thermostat to a wall mount configuration.



## Explosion-proof Disconnect Switch, Remote Mount

**XDC-01 - Disconnect switch - Not suitable for Group B or Group IIB+H<sub>2</sub> (Hydrogen) gas atmosphere**

Class I, Division 1 & 2, Groups C & D; Class II, Division 1, Groups E, F & G; Class II, Division 2, Groups F & G; Class III  
Class I, Zone 1 & 2, Grp IIA & IIB, T5  
600V, 50A max; 15 HP@208/240V, 3 phase; 30 HP@480/600V, 3 phase; 2 HP@120V, 1 phase; 7.5 HP@240V, 1 phase  
Ship wt - 12.0 lbs (5.4 kg)



# XEC1 Heater Performance Data (Single Phase Heaters)

Single Phase - T2B (260°C / 500°F) Division System Temperature Classification Rating - T2 (300°C / 572°F) Zone System Temperature Classification Rating										
Output Power (kW)	Line Volts (V) <sup>^</sup>	Phase (ø)	Cabinet Length Inches (mm)	Base Model Code before Options ↑ ? = Select an Electrical Enclosure Code A or B or C based on availability	Total Amps (A)	"Electrical Enclosure Code" <sup>?</sup> See below for built-in T1 thermostat, wall mount BTX1 or XET1 thermostat, or your own control device				Availability (Δ)
						Built-in T1 Thermostat	Wall Mount BTX1 Thermostat	Wall Mount XET1 Thermostat	Your Own Control Device	
2.26	380 <sup>^</sup>	1	31.3 (795)	XEC1-0226-3801-?-T2B-31-A	5.9	C	B or C	B	B or C	AS
2.50	400 <sup>^</sup>	1	31.3 (795)	XEC1-0250-4001-?-T2B-31-A	6.3	C	B or C	B	B or C	AS
2.69	415 <sup>^</sup>	1	31.3 (795)	XEC1-0269-4151-?-T2B-31-A	6.5	C	B or C	B	B or C	AS
3.03	220 <sup>^</sup>	1	31.3 (795)	XEC1-0303-2201-?-T2B-31-A	13.8	C	B or C	B	B or C	AS
3.03	254 <sup>^</sup>	1	31.3 (795)	XEC1-0303-2541-?-T2B-31-A	11.9	C	B or C	B	B or C	NS
3.03	440 <sup>^</sup>	1	31.3 (795)	XEC1-0303-4401-?-T2B-31-A	6.9	C	B or C	B	B or C	AS
3.31	230 <sup>^</sup>	1	31.3 (795)	XEC1-0331-2301-?-T2B-31-A	14.4	C	B or C	B	B or C	AS
3.60	208	1	31.3 (795)	XEC1-0360-2081-?-T2B-31-A	17.3	C	A or B or C	B	A or B or C	AS
3.60	240	1	31.3 (795)	XEC1-0360-2401-?-T2B-31-A	15.0	C	A or B or C	B	A or B or C	AS
3.60	277	1	31.3 (795)	XEC1-0360-2771-?-T2B-31-A	13.0	C	A or B or C	B	A or B or C	NS
3.60	380 <sup>^</sup>	1	31.3 (795)	XEC1-0360-3801-?-T2B-31-A	9.5	C	B or C	B	B or C	NS
3.60	400 <sup>^</sup>	1	31.3 (795)	XEC1-0360-4001-?-T2B-31-A	9.0	C	B or C	B	B or C	NS
3.60	415 <sup>^</sup>	1	31.3 (795)	XEC1-0360-4151-?-T2B-31-A	8.7	C	B or C	B	B or C	NS
3.60	480	1	31.3 (795)	XEC1-0360-4801-?-T2B-31-A	7.5	C	A or B or C	B	A or B or C	AS
3.60	600	1	31.3 (795)	XEC1-0360-6001-?-T2B-31-A *	6.0	Not Available	A or B	B	A or B or C	NS
4.03	220 <sup>^</sup>	1	49.5 (1257)	XEC1-0403-2201-?-T2B-49-A	18.3	C	B or C	B	B or C	NS
4.03	440 <sup>^</sup>	1	49.5 (1257)	XEC1-0403-4401-?-T2B-49-A	9.2	C	B or C	B	B or C	NS
4.04	254 <sup>^</sup>	1	49.5 (1257)	XEC1-0404-2541-?-T2B-49-A	15.9	C	B or C	B	B or C	NS
4.41	230 <sup>^</sup>	1	49.5 (1257)	XEC1-0441-2301-?-T2B-49-A	19.2	C	B or C	B	B or C	NS
4.76	380 <sup>^</sup>	1	59.5 (1511)	XEC1-0476-3801-?-T2B-59-A	12.5	C	B or C	B	B or C	AS
4.80	208	1	49.5 (1257)	XEC1-0480-2081-?-T2B-49-A #	23.1	Not Available	A or B	B	A or B or C	NS
4.80	240	1	49.5 (1257)	XEC1-0480-2401-?-T2B-49-A	20.0	C	A or B or C	B	A or B or C	NS
4.80	277	1	49.5 (1257)	XEC1-0480-2771-?-T2B-49-A	17.3	C	A or B or C	B	A or B or C	NS
4.80	380 <sup>^</sup>	1	49.5 (1257)	XEC1-0480-3801-?-T2B-49-A	12.6	C	B or C	B	B or C	NS
4.80	400 <sup>^</sup>	1	49.5 (1257)	XEC1-0480-4001-?-T2B-49-A	12.0	C	B or C	B	B or C	NS
4.80	415 <sup>^</sup>	1	49.5 (1257)	XEC1-0480-4151-?-T2B-49-A	11.6	C	B or C	B	B or C	NS
4.80	480	1	49.5 (1257)	XEC1-0480-4801-?-T2B-49-A	10.0	C	A or B or C	B	A or B or C	NS
4.80	600	1	49.5 (1257)	XEC1-0480-6001-?-T2B-49-A *	8.0	Not Available	A or B	B	A or B or C	NS
5.28	400 <sup>^</sup>	1	59.5 (1511)	XEC1-0528-4001-?-T2B-59-A	13.2	C	B or C	B	B or C	AS
5.68	415 <sup>^</sup>	1	59.5 (1511)	XEC1-0568-4151-?-T2B-59-A	13.7	C	B or C	B	B or C	AS
6.27	380 <sup>^</sup>	1	71.8 (1824)	XEC1-0627-3801-?-T2B-71-A	16.5	C	B or C	B	B or C	NS
6.39	220 <sup>^</sup>	1	59.5 (1511)	XEC1-0639-2201-?-T2B-59-A #	29.0	Not Available	B	B	B or C	AS
6.39	254 <sup>^</sup>	1	59.5 (1511)	XEC1-0639-2541-?-T2B-59-A #	25.2	Not Available	B	B	B or C	NS
6.39	440 <sup>^</sup>	1	59.5 (1511)	XEC1-0639-4401-?-T2B-59-A	14.5	C	B or C	B	B or C	AS
6.94	400 <sup>^</sup>	1	71.8 (1824)	XEC1-0694-4001-?-T2B-71-A	17.4	C	B or C	B	B or C	AS
6.98	230 <sup>^</sup>	1	59.5 (1511)	XEC1-0698-2301-?-T2B-59-A #	30.4	Not Available	B	B	B or C	AS
7.48	415 <sup>^</sup>	1	71.8 (1824)	XEC1-0748-4151-?-T2B-71-A	18.0	C	B or C	B	B or C	AS
7.60	208	1	59.5 (1511)	XEC1-0760-2081-?-T2B-59-A #	36.5	Not Available	A or B	B	A or B or C	NS
7.60	240	1	59.5 (1511)	XEC1-0760-2401-?-T2B-59-A #	31.7	Not Available	A or B	B	A or B or C	AS
7.60	277	1	59.5 (1511)	XEC1-0760-2771-?-T2B-59-A #	27.4	Not Available	A or B	B	A or B or C	NS
7.60	380 <sup>^</sup>	1	59.5 (1511)	XEC1-0760-3801-?-T2B-59-A	20.0	C	B or C	B	B or C	NS
7.60	400 <sup>^</sup>	1	59.5 (1511)	XEC1-0760-4001-?-T2B-59-A	19.0	C	B or C	B	B or C	NS
7.60	415 <sup>^</sup>	1	59.5 (1511)	XEC1-0760-4151-?-T2B-59-A	18.3	C	B or C	B	B or C	NS
7.60	480	1	59.5 (1511)	XEC1-0760-4801-?-T2B-59-A	15.8	C	A or B or C	B	A or B or C	AS
7.60	600	1	59.5 (1511)	XEC1-0760-6001-?-T2B-59-A *	12.7	Not Available	A or B	B	A or B or C	NS
8.40	440 <sup>^</sup>	1	71.8 (1824)	XEC1-0840-4401-?-T2B-71-A	19.1	C	B or C	B	B or C	AS
10.00 ‡	380 <sup>^</sup>	1	71.8 (1824)	XEC1-1000-3801-C-T2B-71-A #	26.3	Not Available	Not Available	Not Available	C	NS
10.00 ‡	400 <sup>^</sup>	1	71.8 (1824)	XEC1-1000-4001-C-T2B-71-A #	25.0	Not Available	Not Available	Not Available	C	NS
10.00 ‡	415 <sup>^</sup>	1	71.8 (1824)	XEC1-1000-4151-C-T2B-71-A #	24.1	Not Available	Not Available	Not Available	C	NS
10.00 ‡	480	1	71.8 (1824)	XEC1-1000-4801-C-T2B-71-A	20.8	C	C	Not Available	C	AS
10.00 ‡	600	1	71.8 (1824)	XEC1-1000-6001-C-T2B-71-A *	16.7	Not Available	Not Available	Not Available	C	NS

(^) 220, 230, 254, 380, 400, 415 & 440 Volt heaters are for applications outside of Canada and the U.S.A.

(\*)# Exceeds 480 Volt or 22 Amp rating on factory built-in T1 thermostat. To add the factory supplied wall mount thermostats, Electrical Enclosure **A** or **B** is required. If using your own temperature control device, a remote contactor may be required. Ensure control devices comply to local electrical code and meets the heater's electrical ratings and is suitable for the area's hazardous atmosphere classification.

(†) Refer to Page 4 for XEC1 Model and Option Code Reference Chart

(?) **A** = 120VAC Controls in Large Electrical Enclosure; **B** = 24VAC Controls in Large Electrical Enclosure; **C** = Line Voltage Electrical Enclosure (small Y junction box). Large Electrical Enclosure **A** & **B** include a contactor, transformer, and printed circuit board with fuses. If using your own temperature control device, a remote contactor may be required. Customer can also supply their own remote mount Control Circuit/Enclosure. Ensure control devices comply to local electrical code and meets the heater's electrical ratings and is suitable for the area's hazardous atmosphere classification.

(Δ) **AS** = Assembly stock (approximately 1 to 2 weeks); **NS** = Non-stock (contact factory for lead time)

(‡) All 10 kW heaters include a 1/4" (6.35 mm) diameter 304 stainless steel safety guard pre-installed over the outlet grills.

- Supply voltage must be within +/- 10% of rated heater voltage. Actual Output (kW) = [(Line voltage)<sup>2</sup> + (Rated Voltage)<sup>2</sup>] x Rated Unit Wattage (kW)
- For best heat distribution and comfort, a wall mount thermostat is recommended.

# XEC1 Heater Performance Data (Single Phase Heaters)

Single Phase - T3A (180°C / 356°F) Division System Temperature Classification Rating - T3 (200°C / 392°F) Zone System Temperature Classification Rating										
Output Power (kW)	Line Volts (V) <sup>A</sup>	Phase (Ø)	Cabinet Length Inches (mm)	Base Model Code before Options ↑ ? = Select an Electrical Enclosure Code A or B or C based on availability	Total Amps (A)	"Electrical Enclosure Code" <sup>?</sup> See below for built-in T1 thermostat, wall mount BTX1 or XET1 thermostat, or your own control device				Availability (Δ)
						Built-in T1 Thermostat	Wall Mount BTX1 Thermostat	Wall Mount XET1 Thermostat	Your Own Control Device	
0.40	347	1	31.3 (795)	XEC1-0040-3471-?-T3A-31-A	1.2	C	A or B or C	B	A or B or C	NS
0.60	347	1	31.3 (795)	XEC1-0060-3471-?-T3A-31-A	1.7	C	A or B or C	B	A or B or C	NS
0.75	380 <sup>A</sup>	1	31.3 (795)	XEC1-0075-3801-?-T3A-31-A	2.0	C	B or C	B	B or C	AS
0.83	400 <sup>A</sup>	1	31.3 (795)	XEC1-0083-4001-?-T3A-31-A	2.1	C	B or C	B	B or C	AS
0.90	415 <sup>A</sup>	1	31.3 (795)	XEC1-0090-4151-?-T3A-31-A	2.2	C	B or C	B	B or C	AS
1.01	220 <sup>A</sup>	1	31.3 (795)	XEC1-0101-2201-?-T3A-31-A	4.6	C	B or C	B	B or C	AS
1.01	254 <sup>A</sup>	1	31.3 (795)	XEC1-0101-2541-?-T3A-31-A	4.0	C	B or C	B	B or C	NS
1.01	440 <sup>A</sup>	1	31.3 (795)	XEC1-0101-4401-?-T3A-31-A	2.3	C	B or C	B	B or C	AS
1.10	230 <sup>A</sup>	1	31.3 (795)	XEC1-0110-2301-?-T3A-31-A	4.8	C	B or C	B	B or C	AS
1.13	380 <sup>A</sup>	1	31.3 (795)	XEC1-0113-3801-?-T3A-31-A	3.0	C	B or C	B	B or C	AS
1.20	120	1	31.3 (795)	XEC1-0120-1201-C-T3A-31-A	10.0	C	C	Not Available	C	AS
1.20	208	1	31.3 (795)	XEC1-0120-2081-?-T3A-31-A	5.8	C	A or B or C	B	A or B or C	NS
1.20	240	1	31.3 (795)	XEC1-0120-2401-?-T3A-31-A	5.0	C	A or B or C	B	A or B or C	AS
1.20	277	1	31.3 (795)	XEC1-0120-2771-?-T3A-31-A	4.3	C	A or B or C	B	A or B or C	NS
1.20	347	1	31.3 (795)	XEC1-0120-3471-?-T3A-31-A	3.5	C	A or B or C	B	A or B or C	NS
1.20	380 <sup>A</sup>	1	31.3 (795)	XEC1-0120-3801-?-T3A-31-A	3.2	C	B or C	B	B or C	NS
1.20	400 <sup>A</sup>	1	31.3 (795)	XEC1-0120-4001-?-T3A-31-A	3.0	C	B or C	B	B or C	NS
1.20	415 <sup>A</sup>	1	31.3 (795)	XEC1-0120-4151-?-T3A-31-A	2.9	C	B or C	B	B or C	NS
1.20	480	1	31.3 (795)	XEC1-0120-4801-?-T3A-31-A	2.5	C	A or B or C	B	A or B or C	AS
1.20	600	1	31.3 (795)	<b>XEC1-0120-6001-?-T3A-31-A *</b>	2.0	Not Available	<b>A or B</b>	<b>B</b>	<b>A or B or C</b>	NS
1.25	400 <sup>A</sup>	1	31.3 (795)	XEC1-0125-4001-?-T3A-31-A	3.1	C	B or C	B	B or C	AS
1.35	415 <sup>A</sup>	1	31.3 (795)	XEC1-0135-4151-?-T3A-31-A	3.3	C	B or C	B	B or C	AS
1.51	220 <sup>A</sup>	1	31.3 (795)	XEC1-0151-2201-?-T3A-31-A	6.9	C	B or C	B	B or C	AS
1.51	254 <sup>A</sup>	1	31.3 (795)	XEC1-0151-2541-?-T3A-31-A	5.9	C	B or C	B	B or C	NS
1.51	440 <sup>A</sup>	1	31.3 (795)	XEC1-0151-4401-?-T3A-31-A	3.4	C	B or C	B	B or C	AS
1.61	347	1	49.5 (1257)	XEC1-0161-3471-?-T3A-49-A	4.6	C	A or B or C	B	A or B or C	NS
1.65	230 <sup>A</sup>	1	31.3 (795)	XEC1-0165-2301-?-T3A-31-A	7.2	C	B or C	B	B or C	AS
1.67	347	1	71.8 (1824)	XEC1-0167-3471-?-T3A-71-A	4.8	C	A or B or C	B	A or B or C	NS
1.80	120	1	31.3 (795)	XEC1-0180-1201-C-T3A-31-A	15.0	C	C	Not Available	C	AS
1.80	208	1	31.3 (795)	XEC1-0180-2081-?-T3A-31-A	8.7	C	A or B or C	B	A or B or C	AS
1.80	240	1	31.3 (795)	XEC1-0180-2401-?-T3A-31-A	7.5	C	A or B or C	B	A or B or C	AS
1.80	277	1	31.3 (795)	XEC1-0180-2771-?-T3A-31-A	6.5	C	A or B or C	B	A or B or C	NS
1.80	380 <sup>A</sup>	1	31.3 (795)	XEC1-0180-3801-?-T3A-31-A	4.7	C	B or C	B	B or C	NS
1.80	400 <sup>A</sup>	1	31.3 (795)	XEC1-0180-4001-?-T3A-31-A	4.5	C	B or C	B	B or C	NS
1.80	415 <sup>A</sup>	1	31.3 (795)	XEC1-0180-4151-?-T3A-31-A	4.3	C	B or C	B	B or C	NS
1.80	480	1	31.3 (795)	XEC1-0180-4801-?-T3A-31-A	3.8	C	A or B or C	B	A or B or C	AS
1.80	600	1	31.3 (795)	<b>XEC1-0180-6001-?-T3A-31-A *</b>	3.0	Not Available	<b>A or B</b>	<b>B</b>	<b>A or B or C</b>	NS
2.54	347	1	59.5 (1511)	XEC1-0254-3471-?-T3A-59-A	7.3	C	A or B or C	B	A or B or C	NS
3.01	380 <sup>A</sup>	1	49.5 (1257)	XEC1-0301-3801-?-T3A-49-A	7.9	C	B or C	B	B or C	NS
3.03	220 <sup>A</sup>	1	49.5 (1257)	XEC1-0303-2201-?-T3A-49-A	13.8	C	B or C	B	B or C	AS
3.03	254 <sup>A</sup>	1	49.5 (1257)	XEC1-0303-2541-?-T3A-49-A	11.9	C	B or C	B	B or C	NS
3.03	440 <sup>A</sup>	1	49.5 (1257)	XEC1-0303-4401-?-T3A-49-A	6.9	C	B or C	B	B or C	AS
3.13	380 <sup>A</sup>	1	71.8 (1824)	XEC1-0313-3801-?-T3A-71-A	8.2	C	B or C	B	B or C	NS
3.31	230 <sup>A</sup>	1	49.5 (1257)	XEC1-0331-2301-?-T3A-49-A	14.4	C	B or C	B	B or C	AS
3.33	400 <sup>A</sup>	1	49.5 (1257)	XEC1-0333-4001-?-T3A-49-A	8.3	C	B or C	B	B or C	NS
3.34	440 <sup>A</sup>	1	71.8 (1824)	XEC1-0334-3471-?-T3A-71-A	9.6	C	A or B or C	B	A or B or C	NS
3.47	400 <sup>A</sup>	1	71.8 (1824)	XEC1-0347-4001-?-T3A-71-A	8.7	C	B or C	B	B or C	NS
3.59	415 <sup>A</sup>	1	49.5 (1257)	XEC1-0359-4151-?-T3A-49-A	8.7	C	B or C	B	B or C	NS
3.60	208	1	49.5 (1257)	XEC1-0360-2081-?-T3A-49-A	17.3	C	A or B or C	B	A or B or C	NS
3.60	240	1	49.5 (1257)	XEC1-0360-2401-?-T3A-49-A	15.0	C	A or B or C	B	A or B or C	AS
3.60	277	1	49.5 (1257)	XEC1-0360-2771-?-T3A-49-A	13.0	C	A or B or C	B	A or B or C	NS
3.60	380 <sup>A</sup>	1	49.5 (1257)	XEC1-0360-3801-?-T3A-49-A	9.5	C	B or C	B	B or C	NS
3.60	400 <sup>A</sup>	1	49.5 (1257)	XEC1-0360-4001-?-T3A-49-A	9.0	C	B or C	B	B or C	NS
3.60	480	1	49.5 (1257)	XEC1-0360-4801-?-T3A-49-A	7.5	C	A or B or C	B	A or B or C	AS
3.60	600	1	49.5 (1257)	<b>XEC1-0360-6001-?-T3A-49-A *</b>	6.0	Not Available	<b>A or B</b>	<b>B</b>	<b>A or B or C</b>	NS
3.74	415 <sup>A</sup>	1	71.8 (1824)	XEC1-0374-4151-?-T3A-71-A	9.0	C	B or C	B	B or C	NS
4.20	220 <sup>A</sup>	1	71.8 (1824)	XEC1-0420-2201-?-T3A-71-A	19.1	C	B or C	B	B or C	NS
4.20	254 <sup>A</sup>	1	71.8 (1824)	XEC1-0420-2541-?-T3A-71-A	16.5	C	B or C	B	B or C	NS
4.20	440 <sup>A</sup>	1	71.8 (1824)	XEC1-0420-4401-?-T3A-71-A	9.5	C	B or C	B	B or C	NS
4.59	230 <sup>A</sup>	1	71.8 (1824)	XEC1-0459-2301-?-T3A-71-A	20.0	C	B or C	B	B or C	NS
5.00	208	1	71.8 (1824)	<b>XEC1-0500-2081-?-T3A-71-A #</b>	24.0	Not Available	<b>A or B</b>	<b>B</b>	<b>A or B or C</b>	NS
5.00	240	1	71.8 (1824)	XEC1-0500-2401-?-T3A-71-A	20.8	C	A or B or C	B	A or B or C	NS
5.00	277	1	71.8 (1824)	XEC1-0500-2771-?-T3A-71-A	18.1	C	A or B or C	B	A or B or C	NS
5.00	380 <sup>A</sup>	1	71.8 (1824)	XEC1-0500-3801-?-T3A-71-A	13.2	C	B or C	B	B or C	NS
5.00	400 <sup>A</sup>	1	71.8 (1824)	XEC1-0500-4001-?-T3A-71-A	12.5	C	B or C	B	B or C	NS
5.00	415 <sup>A</sup>	1	71.8 (1824)	XEC1-0500-4151-?-T3A-71-A	12.0	C	B or C	B	B or C	NS
5.00	480	1	71.8 (1824)	XEC1-0500-4801-?-T3A-71-A	10.4	C	A or B or C	B	A or B or C	NS
5.00	600	1	71.8 (1824)	<b>XEC1-0500-6001-?-T3A-71-A *</b>	8.3	Not Available	<b>A or B</b>	<b>B</b>	<b>A or B or C</b>	NS

Refer to comments on bottom of Page 8.

## XEC1 Heater Performance Data (Three Phase Heaters)

Three Phase - T2B (260°C / 500°F) Division System Temperature Classification Rating - T2 (300°C / 572°F) Zone System Temperature Classification Rating									
Output Power (kW)	Line Volts (V) <sup>^</sup>	Phase (ø)	Cabinet Length Inches (mm)	Base Model Code before Options ↑ ? = Select an Electrical Enclosure Code A or B or C based on availability	Total Amps (A)	"Electrical Enclosure Code"?? See below for wall mount BTX1 or XET1 thermostat or your own control device			Availability (Δ)
						Wall Mount BTX1 Thermostat	Wall Mount XET1 Thermostat	Your Own Control Device	
2.26	380 <sup>^</sup>	3	31.3 (795)	XEC1-0226-3803-?-T2B-31-A	3.4	B	B	B or C	NS
2.50	400 <sup>^</sup>	3	31.3 (795)	XEC1-0250-4003-?-T2B-31-A	3.6	B	B	B or C	NS
2.69	415 <sup>^</sup>	3	31.3 (795)	XEC1-0269-4153-?-T2B-31-A	3.7	B	B	B or C	NS
3.03	440 <sup>^</sup>	3	31.3 (795)	XEC1-0303-4403-?-T2B-31-A	4.0	B	B	B or C	NS
3.60	208	3	31.3 (795)	XEC1-0360-2083-?-T2B-31-A	10.0	A or B	B	A or B or C	NS
3.60	240	3	31.3 (795)	XEC1-0360-2403-?-T2B-31-A	8.7	A or B	B	A or B or C	NS
3.60	277	3	31.3 (795)	XEC1-0360-2773-?-T2B-31-A	7.5	A or B	B	A or B or C	NS
3.60	380 <sup>^</sup>	3	31.3 (795)	XEC1-0360-3803-?-T2B-31-A	5.5	B	B	B or C	NS
3.60	400 <sup>^</sup>	3	31.3 (795)	XEC1-0360-4003-?-T2B-31-A	5.2	B	B	B or C	NS
3.60	415 <sup>^</sup>	3	31.3 (795)	XEC1-0360-4153-?-T2B-31-A	5.0	B	B	B or C	NS
3.60	480	3	31.3 (795)	XEC1-0360-4803-?-T2B-31-A	4.3	A or B	B	A or B or C	NS
3.60	600	3	31.3 (795)	XEC1-0360-6003-?-T2B-31-A	3.5	A or B	B	A or B or C	NS
4.03	440 <sup>^</sup>	3	49.5 (1257)	XEC1-0403-4403-?-T2B-49-A	5.3	B	B	B or C	NS
4.76	380 <sup>^</sup>	3	59.5 (1511)	XEC1-0476-3803-?-T2B-59-A	7.2	B	B	B or C	NS
4.80	208	3	49.5 (1257)	XEC1-0480-2083-?-T2B-49-A	13.3	A or B	B	A or B or C	NS
4.80	240	3	49.5 (1257)	XEC1-0480-2403-?-T2B-49-A	11.5	A or B	B	A or B or C	NS
4.80	277	3	49.5 (1257)	XEC1-0480-2773-?-T2B-49-A	10.0	A or B	B	A or B or C	NS
4.80	480	3	49.5 (1257)	XEC1-0480-4803-?-T2B-49-A	5.8	A or B	B	A or B or C	NS
4.80	600	3	49.5 (1257)	XEC1-0480-6003-?-T2B-49-A	4.6	A or B	B	A or B or C	NS
5.28	400 <sup>^</sup>	3	59.5 (1511)	XEC1-0528-4003-?-T2B-59-A	7.6	B	B	B or C	NS
5.68	415 <sup>^</sup>	3	59.5 (1511)	XEC1-0568-4153-?-T2B-59-A	7.9	B	B	B or C	NS
6.27	380 <sup>^</sup>	3	71.8 (1824)	XEC1-0627-3803-?-T2B-71-A	9.5	B	B	B or C	NS
6.39	440 <sup>^</sup>	3	59.5 (1511)	XEC1-0639-4403-?-T2B-59-A	8.4	B	B	B or C	NS
6.94	400 <sup>^</sup>	3	71.8 (1824)	XEC1-0694-4003-?-T2B-71-A	10.0	B	B	B or C	NS
7.48	415 <sup>^</sup>	3	71.8 (1824)	XEC1-0748-4153-?-T2B-71-A	10.4	B	B	B or C	NS
7.60	208	3	59.5 (1511)	XEC1-0760-2083-?-T2B-59-A	21.1	A or B	B	A or B or C	NS
7.60	240	3	59.5 (1511)	XEC1-0760-2403-?-T2B-59-A	18.3	A or B	B	A or B or C	NS
7.60	277	3	59.5 (1511)	XEC1-0760-2773-?-T2B-59-A	15.8	A or B	B	A or B or C	NS
7.60	480	3	59.5 (1511)	XEC1-0760-4803-?-T2B-59-A	9.1	A or B	B	A or B or C	NS
7.60	600	3	59.5 (1511)	XEC1-0760-6003-?-T2B-59-A	7.3	A or B	B	A or B or C	NS
8.40	440 <sup>^</sup>	3	71.8 (1824)	XEC1-0840-4403-?-T2B-71-A	11.0	B	B	B or C	NS
10.00 ‡	208	3	71.8 (1824)	XEC1-1000-2083-C-T2B-71-A	27.8	Not Available	Not Available	C	NS
10.00 ‡	240	3	71.8 (1824)	XEC1-1000-2403-C-T2B-71-A	24.1	Not Available	Not Available	C	NS
10.00 ‡	277	3	71.8 (1824)	XEC1-1000-2773-C-T2B-71-A	20.8	Not Available	Not Available	C	NS
10.00 ‡	380 <sup>^</sup>	3	71.8 (1824)	XEC1-1000-3803-C-T2B-71-A	15.2	Not Available	Not Available	C	NS
10.00 ‡	400 <sup>^</sup>	3	71.8 (1824)	XEC1-1000-4003-C-T2B-71-A	14.4	Not Available	Not Available	C	NS
10.00 ‡	415 <sup>^</sup>	3	71.8 (1824)	XEC1-1000-4153-C-T2B-71-A	13.9	Not Available	Not Available	C	NS
10.00 ‡	480	3	71.8 (1824)	XEC1-1000-4803-C-T2B-71-A	12.0	Not Available	Not Available	C	NS
10.00 ‡	600	3	71.8 (1824)	XEC1-1000-6003-C-T2B-71-A	9.6	Not Available	Not Available	C	NS

(<sup>^</sup>) 220, 230, 254, 380, 400, 415 & 440 Volt heaters are for applications outside of Canada and the U.S.A.

(†) Refer to Page 4 for XEC1 Model and Option Code Reference Chart

(?) **A** = 120VAC Controls in Large Electrical Enclosure; **B** = 24VAC Controls in Large Electrical Enclosure; **C** = Line Voltage Electrical Enclosure (small Y junction box). Large Electrical Enclosure **A** & **B** include a contactor, transformer, and printed circuit board with fuses. If using your own temperature control device, a remote contactor may be required. Customer can also supply their own remote mount Control Circuit/Enclosure. Ensure control devices comply to local electrical code and meets the heater's electrical ratings and is suitable for the area's hazardous atmosphere classification.

(Δ) **AS** = Assembly stock (approximately 1 to 2 weeks); **NS** = Non-stock (contact factory for lead time)

(‡) All 10 kW heaters include a 1/4" (6.35 mm) diameter 304 stainless steel safety guard pre-installed over the outlet grills.

• Supply voltage must be within +/- 10% of rated heater voltage. Actual Output (kW) = [(Line voltage)<sup>2</sup> + (Rated Voltage)<sup>2</sup>] x Rated Unit Wattage (kW)

**Note:** BTX1 and XET1 thermostats are not designed to switch three-phase heaters directly. A factory built-in Electrical Enclosure (**A** or **B**), or customer supplied, remote mount, "Control Circuit" is required.

# XEC1 Heater Performance Data (Three Phase Heaters)

Three Phase - T3A (180°C / 356°F) Division System Temperature Classification Rating - T3 (200°C / 392°F) Zone System Temperature Classification Rating									
Output Power (kW)	Line Volts (V) <sup>(A)</sup>	Phase (ø)	Cabinet Length Inches (mm)	Base Model Code before Options ↑ ? = Select an Electrical Enclosure Code A or B or C based on availability	Total Amps (A)	"Electrical Enclosure Code"? See below for wall mount BTX1 or XET1 thermostat or your own control device			Availability (Δ)
						Wall Mount BTX1 Thermostat	Wall Mount XET1 Thermostat	Your Own Control Device	
1.13	380 <sup>A</sup>	3	31.3 (795)	XEC1-0113-3803-?-T3A-31-A	1.7	B	B	B or C	NS
1.20	208	3	31.3 (795)	XEC1-0120-2083-?-T3A-31-A	3.3	A or B	B	A or B or C	NS
1.20	240	3	31.3 (795)	XEC1-0120-2403-?-T3A-31-A	2.9	A or B	B	A or B or C	NS
1.20	277	3	31.3 (795)	XEC1-0120-2773-?-T3A-31-A	2.5	A or B	B	A or B or C	NS
1.25	400 <sup>A</sup>	3	31.3 (795)	XEC1-0125-4003-?-T3A-31-A	1.8	B	B	B or C	NS
1.35	415 <sup>A</sup>	3	31.3 (795)	XEC1-0135-4153-?-T3A-31-A	1.9	B	B	B or C	NS
1.51	440 <sup>A</sup>	3	31.3 (795)	XEC1-0151-4403-?-T3A-31-A	2.0	B	B	B or C	NS
1.80	208	3	31.3 (795)	XEC1-0180-2083-?-T3A-31-A	5.0	A or B	B	A or B or C	NS
1.80	240	3	31.3 (795)	XEC1-0180-2403-?-T3A-31-A	4.3	A or B	B	A or B or C	NS
1.80	277	3	31.3 (795)	XEC1-0180-2773-?-T3A-31-A	3.8	A or B	B	A or B or C	NS
1.80	480	3	31.3 (795)	XEC1-0180-4803-?-T3A-31-A	2.2	A or B	B	A or B or C	NS
2.26	380 <sup>A</sup>	3	49.5 (1257)	XEC1-0226-3803-?-T3A-49-A	3.4	B	B	B or C	NS
2.50	400 <sup>A</sup>	3	49.5 (1257)	XEC1-0250-4003-?-T3A-49-A	3.6	B	B	B or C	NS
2.69	415 <sup>A</sup>	3	49.5 (1257)	XEC1-0269-4153-?-T3A-49-A	3.7	B	B	B or C	NS
3.01	380 <sup>A</sup>	3	49.5 (1257)	XEC1-0301-3803-?-T3A-49-A	4.6	B	B	B or C	NS
3.03	440 <sup>A</sup>	3	49.5 (1257)	XEC1-0303-4403-?-T3A-49-A	4.0	B	B	B or C	NS
3.13	380 <sup>A</sup>	3	71.8 (1824)	XEC1-0313-3803-?-T3A-71-A	4.8	B	B	B or C	NS
3.33	400 <sup>A</sup>	3	49.5 (1257)	XEC1-0333-4003-?-T3A-49-A	4.8	B	B	B or C	NS
3.47	400 <sup>A</sup>	3	71.8 (1824)	XEC1-0347-4003-?-T3A-71-A	5.0	B	B	B or C	NS
3.59	415 <sup>A</sup>	3	49.5 (1257)	XEC1-0359-4153-?-T3A-49-A	5.0	B	B	B or C	NS
3.60	208	3	49.5 (1257)	XEC1-0360-2083-?-T3A-49-A	10.0	A or B	B	A or B or C	NS
3.60	240	3	49.5 (1257)	XEC1-0360-2403-?-T3A-49-A	8.7	A or B	B	A or B or C	NS
3.60	277	3	49.5 (1257)	XEC1-0360-2773-?-T3A-49-A	7.5	A or B	B	A or B or C	NS
3.60	380 <sup>A</sup>	3	49.5 (1257)	XEC1-0360-3803-?-T3A-49-A	5.5	B	B	B or C	NS
3.60	400 <sup>A</sup>	3	49.5 (1257)	XEC1-0360-4003-?-T3A-49-A	5.2	B	B	B or C	NS
3.60	480	3	49.5 (1257)	XEC1-0360-4803-?-T3A-49-A	4.3	A or B	B	A or B or C	NS
3.60	600	3	49.5 (1257)	XEC1-0360-6003-?-T3A-49-A	3.5	A or B	B	A or B or C	NS
3.74	415 <sup>A</sup>	3	71.8 (1824)	XEC1-0374-4153-?-T3A-71-A	5.2	B	B	B or C	NS
4.20	440 <sup>A</sup>	3	71.8 (1824)	XEC1-0420-4403-?-T3A-71-A	5.5	B	B	B or C	NS
5.00	208	3	71.8 (1824)	XEC1-0500-2083-?-T3A-71-A	13.9	A or B	B	A or B or C	NS
5.00	240	3	71.8 (1824)	XEC1-0500-2403-?-T3A-71-A	12.0	A or B	B	A or B or C	NS
5.00	277	3	71.8 (1824)	XEC1-0500-2773-?-T3A-71-A	10.4	A or B	B	A or B or C	NS
5.00	380 <sup>A</sup>	3	71.8 (1824)	XEC1-0500-3803-?-T3A-71-A	7.6	B	B	B or C	NS
5.00	400 <sup>A</sup>	3	71.8 (1824)	XEC1-0500-4003-?-T3A-71-A	7.2	B	B	B or C	NS
5.00	415 <sup>A</sup>	3	71.8 (1824)	XEC1-0500-4153-?-T3A-71-A	7.0	B	B	B or C	NS
5.00	480	3	71.8 (1824)	XEC1-0500-4803-?-T3A-71-A	6.0	A or B	B	A or B or C	NS
5.00	600	3	71.8 (1824)	XEC1-0500-6003-?-T3A-71-A	4.8	A or B	B	A or B or C	NS

(A) 220, 230, 254, 380, 400, 415 & 440 Volt heaters are for applications outside of Canada and the U.S.A.

(†) Refer to Page 4 for XEC1 Model and Option Code Reference Chart

(?) **A** = 120VAC Controls in Large Electrical Enclosure; **B** = 24VAC Controls in Large Electrical Enclosure; **C** = Line Voltage Electrical Enclosure (small Y junction box). Large Electrical Enclosure **A** & **B** include a contactor, transformer, and printed circuit board with fuses. If using your own temperature control device, a remote contactor may be required. Customer can also supply their own remote mount Control Circuit/Enclosure. Ensure control devices comply to local electrical code and meets the heater's electrical ratings and is suitable for the area's hazardous atmosphere classification.

(Δ) **AS** = Assembly stock (approximately 1 to 2 weeks); **NS** = Non-stock (contact factory for lead time)

• Supply voltage must be within +/- 10% of rated heater voltage. Actual Output (kW) = [(Line voltage)<sup>2</sup> + (Rated Voltage)<sup>2</sup>] x Rated Unit Wattage (kW)

**Note:** BTX1 and XET1 thermostats are not designed to switch three-phase heaters directly. A factory built-in Electrical Enclosure (**A** or **B**), or customer supplied, remote mount, "Control Circuit" is required.

## Additional Products Available

**Hazloc Heaters™** offers a wide variety of steam/hydronic air heaters, explosion-proof electric air heaters, washdown/corrosion resistant air heaters, non-hazardous area air heaters, air sensing thermostats, disconnect switches and other related accessories.

Please visit [www.HazlocHeaters.com](http://www.HazlocHeaters.com) and click on the *Products* link.



 **Hazloc Heaters™** *“Safe heat when you need it!”*

**Quality Mission Statement**

*Quality is... customers that come back, and products that don't.*

### Limited Warranty

**Hazloc Heaters™** warrants all **XEC1** series of explosion-proof electric convection heaters against defects in materials and workmanship under normal conditions of use for a period of eighteen (18) months from date of purchase, or twelve (12) months from date the product is first placed into service, whichever period lapses first, based on the following terms:

1. The heater must not be modified in any way.
2. The heater must be stored, installed and used only in accordance with the owner's manual and attached data plate information.
3. Replacement parts will be provided free of charge as necessary to restore any unit to normal operating condition, provided that the defective parts be returned to us freight prepaid and that the replacement parts be accepted freight collect.
4. The complete heater may be returned to our manufacturing plant for repair or replacement (at our discretion), freight charges prepaid.
5. Contamination by dirt, dust, etc. or corrosion will not be considered as defects.
6. This warranty shall be limited to the actual equipment involved and, under no circumstances, shall include or extend to installation or removal costs, or to consequential damages or losses.



**Hazloc  
Heaters™**

*Safe heat when you need it!*

#1, 666 Goddard Ave. NE  
Calgary, Alberta T2K 5X3 Canada  
Tel.: +1-403-730-2488  
Fax: +1-403-730-2482  
Customer Toll Free (U.S. & Canada):  
+1-866-701-Heat (4328)  
[www.HazlocHeaters.com](http://www.HazlocHeaters.com)



**Available from:**