

**Notes**

**1. Net weight**

Without Thermostat or Disconnect Switch  
15 & 20 kW = 176 lbs (79.8 kg)

**Net Weight Adders**  
Thermostat = 7 lbs (3.1 kg)  
Disconnect Switch = 11 lbs (4.9 kg)

**2. Shipping Weight**

Without Thermostat or Disconnect Switch  
15 & 20 kW = 239 lbs (108.4 kg)

**Ship Weight Adders**  
Thermostat = 7 lbs (3.1 kg)  
Disconnect Switch = 11 lbs (4.9 kg)

**3. Ambient Temperature Limits and Altitude**

Operating: **Gas:** -40°C ≤ Tamb ≤ +40°C; **Dust:** -30°C ≤ Tamb ≤ +40°C (except IECEx with disconnect -20°C ≤ Tamb ≤ +40°C)  
Storage: -50°C to +60°C  
Maximum Altitude: 3000 m ASL

**4. Air Delivery**

15 kW = 2039 m<sup>3</sup>/hr  
20 kW = 2888 m<sup>3</sup>/hr

**5. Hazardous Location Classification**

**Gas Atmosphere Models**  
Ex d IIB T4 Gb IP55 (ATEX) or Ex d IIB T4 Gb IP55 (IECEx)  
(Suitable for ATEX/IECEx Zone 1 & 2)

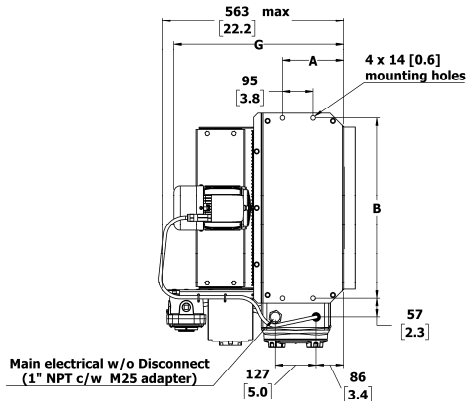
**Dust Atmosphere Models**  
Ex tb IIBB T135°C Db IP65 (ATEX) or Ex tb IIBB T135°C Db IP65 (IECEx)  
(Suitable for ATEX/IECEx Zone 21 & 22)

**6. Materials**

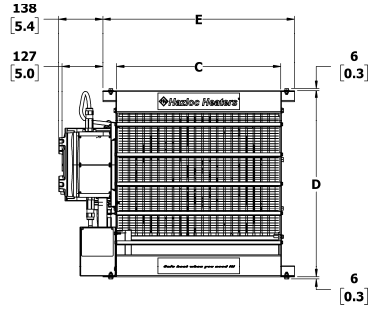
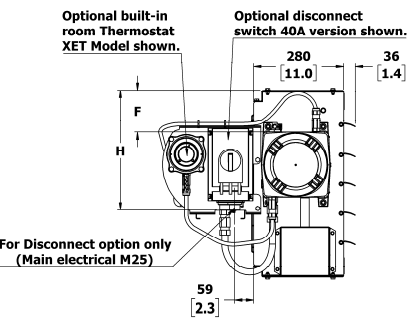
Cabinet: 14 Ga, Yellow Epoxy/Polyester Powder Coated  
Core: Carbon Steel with Copper-free Integral Aluminum Fins Coated with Black, High Heat Enamel  
(Heresite coated core and/or cabinet available)

**Table 1 Specifications for AEU1 Heater, 16" Fan Size**

KW	Line Volt	PH	Hz	Fan Dia. (inch)	Total Amps	Minimum Circuit Ampacity	Max Fuse Size	Supply Wire 90°C mm <sup>2</sup> (AWG)	BASE MODEL (? = G or D)	Flammable Substance Gas (G) Dust (D) (circle one)	Optional Built-in Thermostat (circle one)	Built-in Disconnect Switch <input checked="" type="checkbox"/>	Continuous Fan <input checked="" type="checkbox"/>
15	230	3	50	16	39.2	49.0	50	8.36 (8)	AEU1-?-16-150-230350-B	G or D	None or T1 or T2	(not available)	
	400	3	50		22.7	28.4	30	5.26 (10)	AEU1-?-16-150-400350-B	G or D	None or T1 or T2		
	480	3	60		19.1	23.9	25	5.26 (10)	AEU1-?-16-150-480360-B	G or D	None or T1 or T2		
20	400	3	50	16	29.9	37.4	40	8.36 (8)	AEU1-?-16-200-400350-B	G or D	None or T1 or T2		
	480	3	60		25.1	31.4	35	8.36 (8)	AEU1-?-16-200-480360-B	G or D	None or T1 or T2		



Heater Size	16 (15-20kW)
Dim.	Inches (mm)
A	7.5 (191)
B	22.3 (566)
C	20.3 (515)
D	23.0 (583)
E	23.5 (596)
F	5.1 (130)
G	20.8 (528)
H	14.7 (373)



**Heater Model Code & Option Codes**

**Model Code**  
AEU 1 - G - 16 - 150 - 400 3 50 - B - Y - B

**Option Codes**  
T1, D1, etc. (stamped on separate field of data plate)

**Model Series**  
AEU1

**Generation**  
For major revisions

**Flammable Substance**  
Gas: G  
Dust: D

**Fan Size**  
16" (406 mm)

**Power Output**  
15 kW: 150  
20 kW: 200

**Heater Line Voltage**  
230 Volts<sup>1</sup>: 230 @ 50Hz only  
400 Volts<sup>2</sup>: 400 @ 50Hz only  
480 Volts<sup>3</sup>: 480 @ 60Hz only

**Product Revision No.**  
For minor revisions

**Factory Built-in Options**  
N: No options selected  
Y: Yes, options selected

**Option Codes** (stamped on separate field of data plate)  
T1: Thermostat, Bi-metal (BTX1-E-A)  
T2: Thermostat, Electronic (XET1-1-E-A)  
D2<sup>4</sup>: Disconnect switch, 20A  
D4<sup>4</sup>: Disconnect switch, 40A  
F: Continuous fan  
H1: Heresite Core  
H2: Heresite Cabinet  
H3: Heresite Core/Cabinet

**Control Voltage**  
B: 24VAC

**Frequency**  
50: 50Hz  
60: 60Hz

**Phase**  
3: 3 Phase

Includes louvers and fan

@230 & 400 Volts only

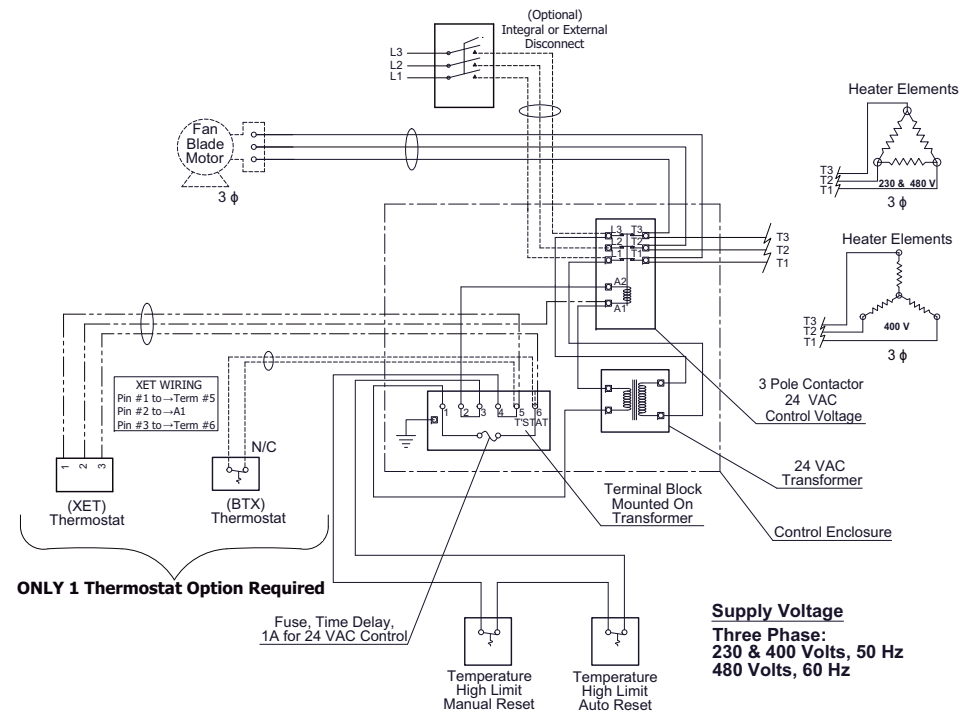
@480 Volts only

<sup>1</sup> Line voltage is 230VAC +/- 5% @ 50Hz.  
<sup>2</sup> Line voltage is 400VAC +/- 5% @ 50Hz.  
<sup>3</sup> Line voltage is 480VAC Max @ 60Hz. Motor has a rated voltage of 460VAC +/- 5%.  
<sup>4</sup> Built-in disconnect switch is shipped with a prebuilt gland / cable assembly that must be installed and inspected on site.

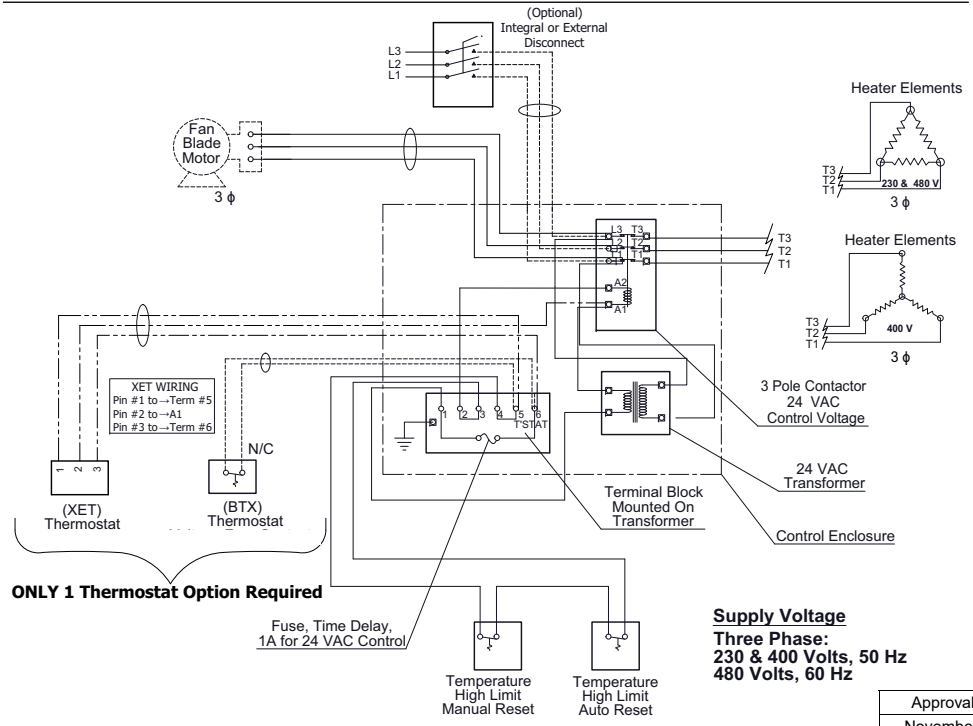
Approval Drawing	AEU1, 16" Fan Size Heater
November 25, 2021	Version 3.0
Hazloc Heaters Inc.	Calgary, Alberta



### Wiring Diagram for Standard Fan Operation



### Wiring Diagram for Continuous Fan Operation



Approval Drawing	AEU1, 16" Fan Size Heater
November 25, 2021	Version 3.0
Hazloc Heaters Inc.	Calgary, Alberta

