

WCH1 NEPTUNE SERIES SUBMITTAL

Washdown/Corrosion-Resistant Unit Heaters

For Non-Hazardous Severe-Duty Locations



KW	Volts	Ph	Total Amps (1)	Approximate Air Temperature Rise °F (°C)	Motor			Catalog Number	☒
					HP	Volts	Ph		
2	120	1	21	9 (5)	1/4	120	1	WCH1-020-120160	<input type="checkbox"/>
	208	1	12	9 (5)	1/4	208	1	WCH1-020-208160	<input type="checkbox"/>
	240	1	11	9 (5)	1/4	240	1	WCH1-020-240160	<input type="checkbox"/>
	277	1	10	9 (5)	1/4	277	1	WCH1-020-277160	<input type="checkbox"/>
	347	1	7	9 (5)	1/4	347	1	WCH1-020-347160	<input type="checkbox"/>
3	120	1	29	14 (8)	1/4	120	1	WCH1-030-120160	<input type="checkbox"/>
	208	1	17	14 (8)	1/4	208	1	WCH1-030-208160	<input type="checkbox"/>
	240	1	15	14 (8)	1/4	240	1	WCH1-030-240160	<input type="checkbox"/>
	277	1	13	14 (8)	1/4	277	1	WCH1-030-277160	<input type="checkbox"/>
	347	1	11	14 (8)	1/4	347	1	WCH1-030-347160	<input type="checkbox"/>
	480	1	8	14 (8)	1/4	480	1	WCH1-030-480160	<input type="checkbox"/>
	208	3	11	14 (8)	1/4	208	1	WCH1-030-208360	<input type="checkbox"/>
	240	3	10	14 (8)	1/4	240	1	WCH1-030-240360	<input type="checkbox"/>
	480	3	5	14 (8)	1/4	480	1	WCH1-030-480360	<input type="checkbox"/>
600	3	4	14 (8)	1/4	600	1	WCH1-030-600360	<input type="checkbox"/>	
5	208	1	27	24 (13)	1/4	208	1	WCH1-050-208160	<input type="checkbox"/>
	240	1	23	24 (13)	1/4	240	1	WCH1-050-240160	<input type="checkbox"/>
	277	1	20	24 (13)	1/4	277	1	WCH1-050-277160	<input type="checkbox"/>
	347	1	17	24 (13)	1/4	347	1	WCH1-050-347160	<input type="checkbox"/>
	480	1	12	24 (13)	1/4	480	1	WCH1-050-480160	<input type="checkbox"/>
	208	3	16	24 (13)	1/4	208	1	WCH1-050-208360	<input type="checkbox"/>
	240	3	15	24 (13)	1/4	240	1	WCH1-050-240360	<input type="checkbox"/>
	480	3	8	24 (13)	1/4	480	1	WCH1-050-480360	<input type="checkbox"/>
600	3	6	24 (13)	1/4	600	1	WCH1-050-600360	<input type="checkbox"/>	
7.5	208	1	39	35 (19)	1/4	208	1	WCH1-075-208160	<input type="checkbox"/>
	240	1	34	35 (19)	1/4	240	1	WCH1-075-240160	<input type="checkbox"/>
	277	1	29	35 (19)	1/4	277	1	WCH1-075-277160	<input type="checkbox"/>
	347	1	24	35 (19)	1/4	347	1	WCH1-075-347160	<input type="checkbox"/>
	480	1	17	35 (19)	1/4	480	1	WCH1-075-480160	<input type="checkbox"/>
	208	3	23	35 (19)	1/4	208	1	WCH1-075-208360	<input type="checkbox"/>
	240	3	21	35 (19)	1/4	240	1	WCH1-075-240360	<input type="checkbox"/>
	480	3	11	35 (19)	1/4	480	1	WCH1-075-480360	<input type="checkbox"/>
	600	3	9	35 (19)	1/4	600	1	WCH1-075-600360	<input type="checkbox"/>
9	208	1	46	20 (11)	1/4	208	1	WCH1-090-208160	<input type="checkbox"/>
	240	1	40	20 (11)	1/4	240	1	WCH1-090-240160	<input type="checkbox"/>
	277	1	35	20 (11)	1/4	277	1	WCH1-090-277160	<input type="checkbox"/>
	347	1	29	20 (11)	1/4	347	1	WCH1-090-347160	<input type="checkbox"/>
	480	1	20	20 (11)	1/4	480	1	WCH1-090-480160	<input type="checkbox"/>
	208	3	28	20 (11)	1/4	208	1	WCH1-090-208360	<input type="checkbox"/>
	240	3	24	20 (11)	1/4	240	1	WCH1-090-240360	<input type="checkbox"/>
	480	3	12	20 (11)	1/4	480	1	WCH1-090-480360	<input type="checkbox"/>
	600	3	10	20 (11)	1/4	600	1	WCH1-090-600360	<input type="checkbox"/>

(1) Total Amps = Heating element amps and motor amps.

WCH1 NEPTUNE SERIES SUBMITTAL

Washdown/Corrosion-Resistant Unit Heaters

For Non-Hazardous Severe-Duty Locations



KW	Volts	Ph	Total Amps (1)	Approximate Air Temperature Rise °F (°C)	Motor			Catalog Number	<input type="checkbox"/>
					HP	Volts	Ph		
10	240	1	44	22 (12)	1/4	240	1	WCH1-100-240160	<input type="checkbox"/>
	277	1	39	22 (12)	1/4	277	1	WCH1-100-277160	<input type="checkbox"/>
	347	1	32	22 (12)	1/4	347	1	WCH1-100-347160	<input type="checkbox"/>
	480	1	22	22 (12)	1/4	480	1	WCH1-100-480160	<input type="checkbox"/>
	208	3	30	22 (12)	1/4	208	1	WCH1-100-208360	<input type="checkbox"/>
	240	3	27	22 (12)	1/4	240	1	WCH1-100-240360	<input type="checkbox"/>
	480	3	14	22 (12)	1/4	480	1	WCH1-100-480360	<input type="checkbox"/>
	600	3	11	22 (12)	1/4	600	1	WCH1-100-600360	<input type="checkbox"/>
12	277	1	46	26 (14)	1/4	277	1	WCH1-120-277160	<input type="checkbox"/>
	347	1	38	26 (14)	1/4	347	1	WCH1-120-347160	<input type="checkbox"/>
	480	1	27	26 (14)	1/4	480	1	WCH1-120-480160	<input type="checkbox"/>
	208	3	36	26 (14)	1/4	208	1	WCH1-120-208360	<input type="checkbox"/>
	240	3	32	26 (14)	1/4	240	1	WCH1-120-240360	<input type="checkbox"/>
	480	3	16	26 (14)	1/4	480	1	WCH1-120-480360	<input type="checkbox"/>
	600	3	13	26 (14)	1/4	600	1	WCH1-120-600360	<input type="checkbox"/>
12.5	347	1	39	17 (9)	1/4	347	1	WCH1-125-347160	<input type="checkbox"/>
	208	3	37	17 (9)	1/4	208	1	WCH1-125-208360	<input type="checkbox"/>
	240	3	33	17 (9)	1/4	240	1	WCH1-125-240360	<input type="checkbox"/>
	480	3	17	17 (9)	1/4	480	1	WCH1-125-480360	<input type="checkbox"/>
	600	3	14	17 (9)	1/4	600	1	WCH1-125-600360	<input type="checkbox"/>
15	347	1	47	21 (12)	1/4	347	1	WCH1-150-347160	<input type="checkbox"/>
	208	3	44	21 (12)	1/4	208	1	WCH1-150-208360	<input type="checkbox"/>
	240	3	39	21 (12)	1/4	240	1	WCH1-150-240360	<input type="checkbox"/>
	480	3	20	21 (12)	1/4	480	1	WCH1-150-480360	<input type="checkbox"/>
	600	3	16	21 (12)	1/4	600	1	WCH1-150-600360	<input type="checkbox"/>
20	480	3	26	28 (16)	1/4	480	1	WCH1-200-480360	<input type="checkbox"/>
	600	3	21	28 (16)	1/4	600	1	WCH1-200-600360	<input type="checkbox"/>
25	480	3	32	35 (19)	1/4	480	1	WCH1-250-480360	<input type="checkbox"/>
	600	3	26	35 (19)	1/4	600	1	WCH1-250-600360	<input type="checkbox"/>
30	480	3	38	42 (23)	1/4	480	1	WCH1-300-480360	<input type="checkbox"/>
	600	3	31	42 (23)	1/4	600	1	WCH1-300-600360	<input type="checkbox"/>
35	480	3	44	48 (27)	1/4	480	1	WCH1-350-480360	<input type="checkbox"/>
	600	3	35	48 (27)	1/4	600	1	WCH1-350-600360	<input type="checkbox"/>
38.4	480	3	48	54 (30)	1/4	480	1	WCH1-384-480360	<input type="checkbox"/>
	600	3	38	54 (30)	1/4	600	1	WCH1-384-600360	<input type="checkbox"/>
47	600	3	47	64 (36)	1/4	600	1	WCH1-470-600360	<input type="checkbox"/>

(1) Total Amps = Heating element amps and motor amps.

WCH1 NEPTUNE SERIES SUBMITTAL

Washdown/Corrosion-Resistant Unit Heaters

For Non-Hazardous Severe-Duty Locations



Factory Built-in Options

Code	Description	<input checked="" type="checkbox"/>
V	120 volt control circuit, fused secondary and grounded	<input type="checkbox"/>
C	Yellow Epoxy/polyester painted stainless steel parts housing and grilles	<input type="checkbox"/>
D	Power disconnect switch	<input type="checkbox"/>
E	Monel finned tubular elements	<input type="checkbox"/>
M	Secondary manual reset overtemperature cutout. Required for U.S. Coast Guard approved design.	<input type="checkbox"/>
L	"Heater On" Red pilot light	<input type="checkbox"/>
S	Three-position selector switch (heater-standby-fan)	<input type="checkbox"/>
T	Built-in thermostat 40 to 100°F (5 to 38°C) range. <i>Adjustment knob has "warmer" indicator label.</i>	<input type="checkbox"/>
B	Delete swivel mounting bracket. Heater installs from the ceiling with field-furnished threaded rods.	<input type="checkbox"/>

Accessory Remote Room Thermostat

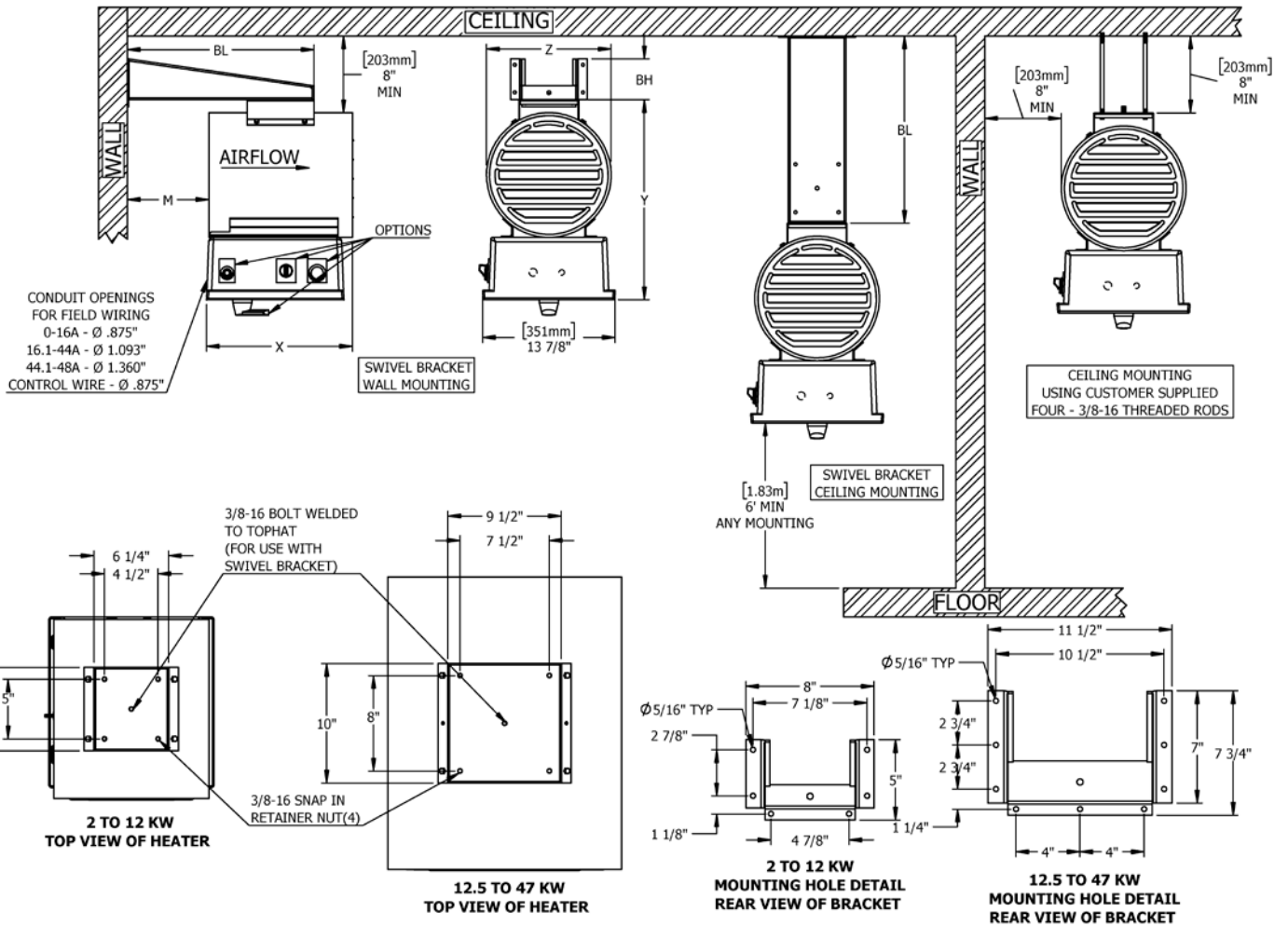
Catalog Number	Description	<input checked="" type="checkbox"/>
1004328	SPDT NEMA 4X Washdown/Corrosion-Resistant wall-mounted thermostat for non-hazardous locations: 40° - 110°F (4° - 43°C) range.	<input type="checkbox"/>

Dimensions, Airflows and Weights		KW		
		2-7.5	9-12	12.5-47
Overall Heater Dimensions	"X" Inch (cm)	15 ½ (39)	15 ½ (39)	26 (66)
	"Y" Inch (cm)	21 ½ (55)	21 ½ (55)	28 (71)
	"Z" Inch (cm)	13 (33)	13 (33)	20 (51)
Mounting Hole Dimensions	"BH" Inch (cm)	4 ¼ (11)	4 ¼ (11)	7 1/8 (18)
	"BL" Inch (cm)	19 1/8 (49)	19 1/8 (49)	22 ¼ (57)
	"M" Inch (cm)	8 ½ (22)	8 ½ (22)	3 ¼ (8)
Airflow Characteristics	Air Volume CFM (cubic meters/hr)	700 (1189)	1450 (2463)	2400 (4077)
	Air Throw Feet (m)	26 (8)	43 (13)	50 (15)
	Outlet Velocity FPM (meters/min)	760 (232)	1575 (481)	1200 (366)
Weight	Net Lbs (kgs)	56 (25)	56 (25)	115 (52)
	Shipping Lbs	70 (32)	70 (32)	130 (60)

WCH1 NEPTUNE SERIES SUBMITTAL

Washdown/Corrosion-Resistant Unit Heaters

For Non-Hazardous Severe-Duty Locations



WCH1 NEPTUNE SERIES SUBMITTAL

Washdown/Corrosion-Resistant Unit Heaters

For Non-Hazardous Severe-Duty Locations



Page 5 of 5

WCH1 Neptune Series Engineering Specifications

A sample specification can be prepared by using the following information. A check box has been supplied so that you may mark those sections which you require. Material which is part of the standard WCH1 Neptune specification has already been checked.

- 1. Electric unit heaters shall be Hazloc Heaters™ WCH1 Neptune Series, with built-in controls, UL and cUL Listed for corrosive areas and NEMA 4X hose down requirements. Heater to be forced fan type of the kW rating, voltage and phase specified in the schedule.
- 2. Finned tubular heating elements shall be of type 316 stainless steel sheath with mechanically wound stainless steel fins and mounting fittings.
- 3. The motor shall be UL Recognized, totally enclosed with permanently lubricated ball bearings, designed to resist moisture and corrosion, fitted with an epoxy-coated aluminum fan blade and factory wired to NEMA 4X enclosure.
- 4. Heating elements and motor to be enclosed in round, heavy 16 gauge stainless steel shroud, with stainless steel louvered outlet grille and plated rear grille.
- 5. Single point, line voltage connection for incoming power for 120, 208, 240, 277, 347, 480 and 600V heaters.
- 6. NEMA 4X enclosure to house element terminals and the following standard built-in controls: automatic reset over-temperature cutout, 24V control transformer, fan delay relay, required contactors, and terminal block for field wiring. For heaters above 12 kW, a separate motor contactor will be supplied.
- 7. The following optional controls are to be built-in and factory-rewired in the NEMA 4X enclosure:
 - Thermostat with external adjustable knob (*Adjustment knob has "warmer" indicator label*).
 - Three position selector switch
 - "Heater On" pilot light to indicate when heating elements are energized
 - Secondary manual reset thermal cutout (required for U.S. Coast Guard Approved designs)
 - Disconnect switch
 - 120V control circuit (Replaces 24V transformer)
- 8. Monel finned tubular elements option for added corrosion protection (replaces stainless steel elements).
- 9. Accessory thermostat shall be furnished with each heater for remote wall mounting. Thermostat shall be UL Listed with NEMA 4X enclosure suitable for wet and corrosive areas.